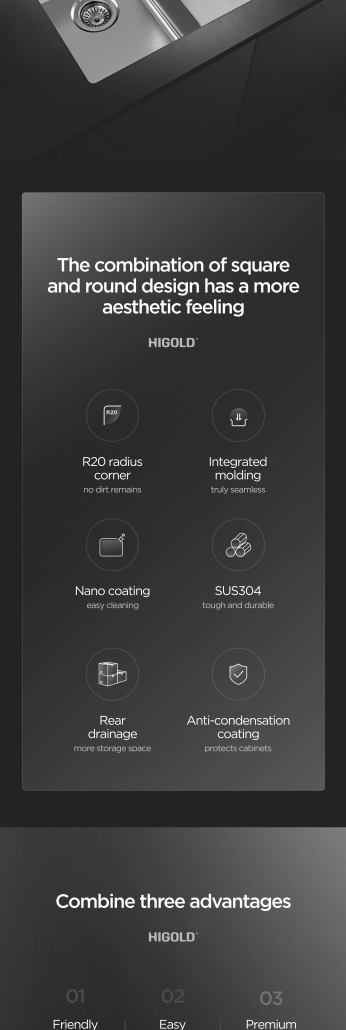


HIGOLD®

# Higold R20 series sink

Bright and clean kitchen



## The combination of square and round design has a more aesthetic feeling

HIGOLD®

- R20 radius corner**  
no dirt remains
- Integrated molding**  
truly seamless
- Nano coating**  
easy cleaning
- SUS304**  
tough and durable
- Rear drainage**  
more storage space
- Anti-condensation coating**  
protects cabinets

## Combine three advantages

HIGOLD®

- 01 Friendly and practical**  
One-piece stamped drawn sink
- 02 Easy maintenance**  
Nano-coating surface
- 03 Premium and gorgeous**  
Stainless steel sink  
Small R corner design

## Significant cost advantage Upgrade integrated technology

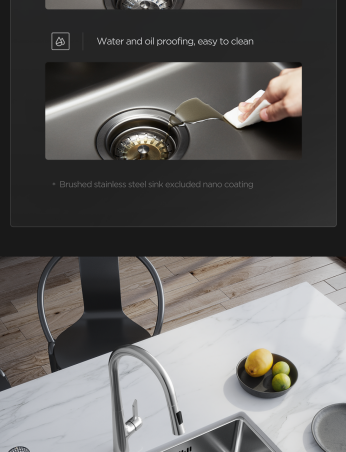
Quality comparable to handmade sink with lower cost

HIGOLD®

**Cost reduction 15-20%**

R20	Handmade sink
Design similar to handmade sink	Handcrafting
Stainless steel sink	Stainless steel sink
Integrated molding, cost saving	High cost

HIGOLD®



## 20° Radius Corner

Gorgeous and easy to clean Large space usage

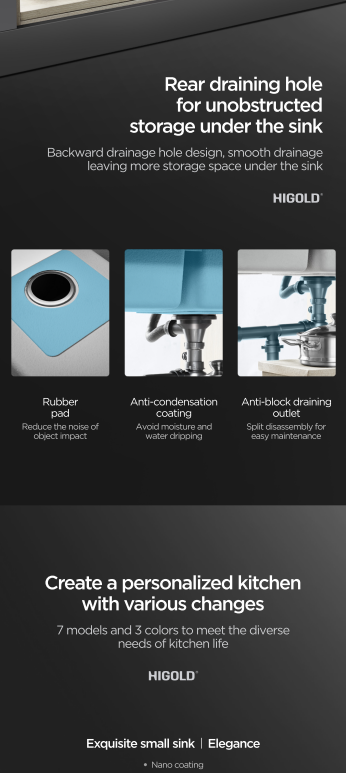
<b>Smooth without oil stains</b> More convenient to clean	<b>Compared to large round corner</b> More washing space
--	---

## One-piece stamped drawn sink

Design comparable to handmade sink

R20 series sink is not only a seamless integrated molding with no welding point but also achieves premium and gorgeous appearance like a handmade sink

HIGOLD®



HIGOLD®

**SUS304**  
Corrosion resistance and durability

- Rust resistant
- Eco-friendly and healthy
- Heat and wear resistant
- Easy to clean

## Nano air film

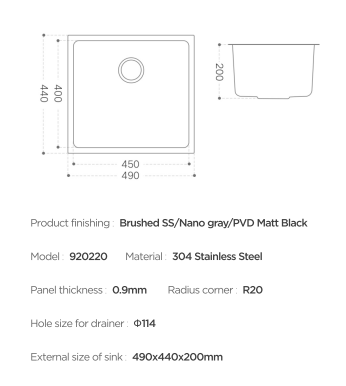
Hydrophobic and oil-phobic without leaving any mark, improving the corrosion resistance of the sink

- Wear-resistance, Anti-scratch, Strong stability
- Water and oil proofing, easy to clean

\* Brushed stainless steel sink excluded nano coating

## Three installation methods

Topmount | Flushmount | Undermount



## No restriction for faucet

Flexible and easy to install

Free choice of faucet installation position Easily match different kitchen space

HIGOLD®



## Rear drainage hole for unobstructed storage under the sink

Backward drainage hole design, smooth drainage leaving more storage space under the sink

HIGOLD®

- Rubber pad**  
Reduce the noise of object impact
- Anti-condensation coating**  
Avoid moisture and water dripping
- Anti-block draining outlet**  
Split disassembly for easy maintenance

## Create a personalized kitchen with various changes

7 models and 3 colors to meet the diverse needs of kitchen life

HIGOLD®



## Exquisite small sink | Elegance

\* Nano coating



## Product List ( Single bowl )

HIGOLD®

- Brushed stainless steel
- Nano gray
- PVD Matt Black
- Drainage set

## Product specification

HIGOLD®

Product finishing: **Brushed SS/Nano gray/PVD Matt Black**  
Model: **920218** Material: **304 Stainless Steel**  
Panel thickness: **0.9mm** Radius corner: **R20**  
Hole size for drainer: **Φ114**  
External size of sink: **340x440x200mm**  
Internal size of sink: **303x403xR20mm**

Product finishing: **Brushed SS/Nano gray/PVD Matt Black**  
Model: **920219** Material: **304 Stainless Steel**  
Panel thickness: **0.9mm** Radius corner: **R20**  
Hole size for drainer: **Φ114**  
External size of sink: **440x440x200mm**  
Internal size of sink: **403x403xR20mm**

Product finishing: **Brushed SS/Nano gray/PVD Matt Black**  
Model: **920220** Material: **304 Stainless Steel**  
Panel thickness: **0.9mm** Radius corner: **R20**  
Hole size for drainer: **Φ114**  
External size of sink: **490x440x200mm**  
Internal size of sink: **453x403xR20mm**

Product finishing: **Brushed SS/Nano gray/PVD Matt Black**  
Model: **920221** Material: **304 Stainless Steel**  
Panel thickness: **0.9mm** Radius corner: **R20**  
Hole size for drainer: **Φ114**  
External size of sink: **540x440x200mm**  
Internal size of sink: **503x403xR20mm**

## Product List ( Double Bowls )

HIGOLD®

- Brushed stainless steel
- Nano gray
- PVD Matt Black
- Drainage set

## Product specification

HIGOLD®

Product finishing: **Brushed SS/Nano gray/PVD Matt Black**  
Model: **920228** Material: **304 Stainless Steel**  
Panel thickness: **0.9mm** Radius corner: **R20**  
Hole size for drainer: **Φ114**  
External size of sink: **815x440x200mm**  
Internal size of sink: **778x403xR20mm**

Product finishing: **Brushed SS/Nano gray/PVD Matt Black**  
Model: **920222** Material: **304 Stainless Steel**  
Panel thickness: **0.9mm** Radius corner: **R20**  
Hole size for drainer: **Φ114**  
External size of sink: **765x440x200mm**  
Internal size of sink: **728x403xR20mm**

Product finishing: **Brushed SS/Nano gray/PVD Matt Black**  
Model: **920223** Material: **304 Stainless Steel**  
Panel thickness: **0.9mm** Radius corner: **R20**  
Hole size for drainer: **Φ114**  
External size of sink: **865x440x200mm**  
Internal size of sink: **828x403xR20mm**